



Year After Year the Number 1 Choice.



2 Years
Limited
Warranty

Impacts 1/2"
CP734H

Ratchets
3/8" & 1/2"



CP828

Die Grinders
1/4"



CP860

Angle Grinders
4", 5" & 7"



CP854 & CP857

Drills
3/8" & 1/2"



CP785

Hammers
0.401" & 0.498"



CP717



Chicago Pneumatic

CP734H 1/2" Super Duty Air Impact Wrench



Accessories see page 4

- DYNA-PACT oil bath clutch delivers smooth operation and extended durability
- One hand push button forward/reverse power regulator. 4 positive power settings. Ultimate power in reverse
- Handle exhaust with 360° air inlet swivel to prevent hose kinks
- Power and economy for general repair, transmission work, exhaust systems and body shops
- **Ultimate Torque:**
425ft.lbs (576Nm)

CP797 1" Heavy Duty Air Impact Wrench



- Long known as the workhorse of the truck tire industry
- Rocking dog clutch for smooth operation and extreme durability
- Teasing throttle for easy bolt starting
- Convenient reverse valve for easy directional changes
- Choice of professional mechanics for high volume tire work on trucks, buses and heavy equipment
- **Ultimate Torque:**
1,400ft.lbs (1898Nm)

CP797-G

1" Super Duty Air Impact Wrench

- Truck tire tool of choice
- Same great features as the CP797 with a 6" extended anvil for tyre work
- Choice of professional mechanics for high volume tire work on trucks, buses and heavy equipment
- **Ultimate Torque:**
1,400ft.lbs (1898Nm)

CP797SP-G

1" Super Duty Air Impact Wrench

- Same great features as the CP797 with a 6" extended anvil and #5 spline
- **Ultimate Torque:**
1,400ft.lbs (1898Nm)

Accessories see page 4

CP772H 3/4" Heavy Duty Air Impact Wrench



- Smoothest operating 3/4" impact on the market with unmatched durability
- One hand push button forward/reverse power regulator. 4 positive power settings in forward and ultimate power in reverse
- Handle exhaust with 360° air inlet swivel to prevent hose kinks
- New comfortable contoured handle grip
- Ideal for spring work, truck and bus maintenance, farm machinery and construction equipment
- **Ultimate Torque:**
1,000ft.lbs (1356Nm)

CP772H-G

3/4" Heavy Duty Air Impact Wrench

Same great features as the CP772H with a 6" (150mm) extended anvil for tire work.

Accessories see page 4

CP828 3/8" Heavy Duty Air Ratchet



- Features CP's new **TriSpring** anti-slip head design which virtually eliminates slippage while reducing the potential for heat build-up, even in long run downs
- Compact, yet packed with power and speed
- **Ultimate Torque:**
50ft.lbs (68Nm)



CP828H

1/2" Heavy Duty Ratchet

- Same great features as the CP828 with a 1/2" square drive
- **Ultimate Torque:**
50ft.lbs (68Nm)

Accessories see page 4

MODEL	PART NO.	Square Drive	Working Torque Range		Max. Torque@90PSI Rev.		Free Speed	Weight		Length		Avg. Air Consumption		Air Inlet Thread Size NPTF	Sound dB(A)	VIBRATION m/s ²	
		in.	Nm	ft.lbs	Nm	ft.lbs	rpm	kg	lb	mm	in.	l/min.	CFM	in.	Pressure	a	K
CP734H	T024351	1/2	34-420	25-310	576	425	8.400	2.33	5.13	232	9.13	106	3.75	1/4	93	7.2	3.3
CP772H	T024598	3/4	203-949	150-700	1356	1.000	4.200	4.76	10.5	245	9.6	170	6	3/8	96	5.8	2.0
CP772H-G	T024757	3/4	203-949	150-700	1356	1.000	4.200	5.28	11.63	394	15.5	170	6	3/8	96	5.8	2.0
CP797	T019139	1	203-1220	150-900	1898	1.400	4.200	12.25	27	394	15.5	283	10	1/2	110	12.8	4.3
CP797-G/CP797SP-G	T013901 / T018653	1 / #5 spline	203-1220	150-900	1898	1.400	4.200	13.49	29.75	565	22.25	283	10	1/2	110	12.8	4.3
CP828/CP828H	T022708 / T022970	3/8	14-68	10-50	68	50	150	1.08	2.4	254	10	106	3.75	1/4	96.5	3.2	1.3



Chicago Pneumatic

CP854 4" Heavy Duty Angle Grinder



- Powerful 0.6hp (450W) high performance motor for fast, efficient grinding in tight quarters
- Aluminum alloy housing is rugged yet lightweight for maximum operator comfort
- Spiral bevel gearing in angle head provides extended life and smooth low vibration
- Excellent for weld preparation and smoothing, rust removal, deburring and blending of steel, cast iron and aluminum
- Max rpm: 12,000

CP854E

5" Heavy Duty Angle Grinder

Same great features as the CP854 with a 5" (127mm) guard

CP860 1/4" Heavy Duty Die Grinder



- Rugged, energy efficient 0.5hp (370W) motor
- Adjustable speed regulator for precise control
- Lock off throttle to prevent accidental start ups
- Square handle design for positive grip
- Complete with 1/4" collet
- Excellent for cleaning tire modeling, porting and relieving engines, and general high-speed polishing and grinding
- Max rpm: 24,000

CP860E

Heavy Duty Die Grinder

Same great features as the CP860 with a 6mm collet

CP860ES

Heavy Duty Die Grinder

Same great features as the CP860 with a 6" (150mm) extended shank

CP860ESE

Heavy Duty Die Grinder

Same great features as the CP860ES with a 6mm collet



CP857 7" Heavy Duty Angle Grinder



- Powerful 1.25hp (950W) high performance motor for fast metal removal
- Aluminum alloy housing is rugged, yet lightweight
- Spiral bevel gearing in angle head provides extended life and smooth low vibration
- Excellent for weld preparation and smoothing, rust removal, deburring and blending of steel, cast iron and aluminum
- Max rpm: 7,500

Grinders Accessories

PART NUMBER

DESCRIPTION

C136898
KF141860

4" (100mm) guard
5" (127mm) guard

Rear Exhaust Hose Assembly

FOR CP860E & CP860ESE



CA127175

Includes:
CA046270
1/4 x 6" Whip Hose
KF127210
5" Exhaust Overhose
KF127211
Attachment Ferrule

MODEL	PART NO.	Collet/ Spindle	Wheel Size		Maximum	Weight		Length		Avg. Air Consumption		Actual. Air Consumption		Air Inlet Thread Size NPTF	Minimum Hose Size		Sound dB(A)	VIBRATION m/s²	
		in.	mm	in	rpm	kg	lbs	mm	in	l/min.	CFM	l/min.	CFM	in.	mm	in	Pressure	a	K
CP854	T023186	3/8-24	100	5	12,000	1.7	3.75	229	9	340	12	679	24	1/4	10	3/8	85	4.94	1.5
CP854E	T023187	10mm x 1.5P	127	5	12,000	1.7	3.75	229	9	340	12	679	24	1/4	10	3/8	85	4.94	1.5
CP857	T024387	5/8-11	178	7	7,500	2.83	6.25	334	13.13	340	12	679	24	1/4	10	3/8	101.9	3.98	1.29
CP860/ 860E	T019704 / T021136	1/4	-	-	24,000	0.57	1.25	146	5.7	297	10.5	555	21	1/4	10	3/8	92.6	3.7	1.6
CP860ES/ CP860ESE	T023193 / T023354	1/4	-	-	24,000	0.95	2.1	298	11.7	297	10.5	555	21	1/4	10	3/8	93	3.7	1.5

Listed specifications are for reference only. Please check documents in each tool.



Chicago Pneumatic

Impact & Ratchet Accessories

MODEL	TUNE-UP KIT	REPAIR KIT	REPLACEMENT HEAD	PROTECTIVE COVER
CP734H	CA147716	CA147717		CA129405
CP772H	CA149746	CA149747		CA124745
CP797				CA139818
CP828 (D,N,E)	CA155086		CA155084	CA133961
CP828H (D,N,E)	CA155086		CA155085	CA133961
CP828H (A,K)	CA155086		CA155085	CA133961

Impact & Ratchet Kits

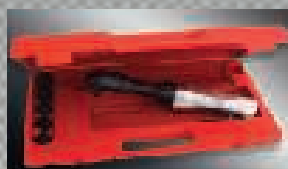


CP734HK / CP734HKM KITS T025163 / T025164

Kits include:
(1) CP734H - 1/2" Impact
(5) Imperial Sockets
(1/2", 5/8", 3/4", 7/8", 15/16")
or (5) Metric Sockets
(14, 16, 17, 19, 22mm)

CP772HK / CP772HKM KITS T025171 / T025162

Kits include:
(1) CP772H - 3/4" Impact
(4) Imperial Sockets
(15/16", 1", 1-1/16", 1-1/8")
or (4) Metric Sockets
(24, 27, 30, 32mm)



CP828K / CP828KM KITS T024201 / T024493

Kits include:
(1) CP828 - 3/8" Ratchet
(5) Imperial Sockets
(3/8", 7/16", 1/2", 9/16", 5/8")
or (5) Metric Sockets
(10, 13, 14, 16, 17mm)

CP828HKM KIT T024448

Kits include:
(1) CP828H - 1/2" Ratchet
(5) Metric Sockets
(10, 13, 14, 16, 17mm)

CP714 Super Duty Pistol Grip Hammer



- Positive action trigger for precise control over speed range
- Speed regulator
- Ergonomic handle orientation
- Versatile, handling a wide range of body shop applications including front end, exhaust, frame and body work
- Operator comfort & control

CP714 Super Duty Hammer Kit



Part No. T025364
Kit includes:
• (1) CP714 Hammer
• (4) Chisels

CP717 Super Duty Pistol Grip Hammer



- Standard .498 round shank
- Most powerful CP air hammer
- Positive action trigger
- Power and precision
- Flexible operating positions
- Ideal tool for deep cutting, bolt riveting and super duty applications

CP717 Super Duty Hammer Kit



Part No. T025365
Kit includes:
• (1) CP717 Hammer
• (4) Chisels

MODEL	PART NO.	COLD RIVET CAP.				BORE AND STROKE		BLOWS PER MIN.	CHISEL RIVET SET SHANK		AIR CONS.		OVERALL LENGTH		NET WEIGHT		AIR INLET	SOUND PRESSURE	VIBRATION m/s ²	
		(DURAL)		(STEEL)																
		Nm	in.	Nm	in.	mm	in.		mm	in.	l/s	cfm	mm	in.	kg	lb	NPTF	dB(A)	a	K
CP714	T012735	6.4	1/4	4.8	3/16	14x80	9/16x3.5	2000	10.2	0.401	1.6	3.4	171	6.7	1.5	3.3	1/4"	80	13.2	5.8
CP717	T020120	6.4	1/4	4.8	3/16	19x68	3/4x2.69	1800	12.7	0.498	1.5	3.1	190	7.5	2.0	4.4	1/4"	84	13.0	7.0



Chicago Pneumatic

CP785 Standard Duty Pistol Drill



CP785

3/8" Standard duty pistol drill

- Powerful 0.5 hp (380W) energy efficient motor resists stalls
- Triple idler planetary gearing
- Ergonomic handle
- Handle exhaust
- Smooth operation and extended tool life
- Unmatched durability
- Ideal tool for all types of maintenance, general auto, truck work and body shops

CP785QC

3/8" Standard duty pistol drill

- Powerful 0.5 hp (380W) energy efficient motor resists stalls
- Triple idler planetary gearing
- Ergonomic handle
- Handle exhaust
- Smooth operation and extended tool life
- Unmatched durability
- Ideal tool for all types of maintenance, general auto, truck work and body shops
- Quick change/keyless chuck

CP785H

1/2" Standard duty pistol drill

- Powerful energy efficient motor resistant to stalls
- Triple idler planetary gearing
- Side handle for comfort and control
- Smooth operation and extended tool life
- Operator comfort and safety
- Suitable tool for various applications of large drilling

CP789 Super Duty Reversible Drill



CP789HR

1/2" Super duty pistol drill

- Powerful with 0.5 hp (380W) motor, 15.6 ft-lbs (21.1Nm) of torque
- Teasing throttle and low speed for precision drilling at 500 rpm
- Industrial quality Jacob's chuck
- Needle bearing gearing
- Reversible and ergonomic grip
- Side handle for comfort and control
- Maximize operator comfort
- Productivity coupled with extreme durability
- Perfect tool for heavy drilling, reaming, hole sawing and jobs requiring high torque

CP789R-26

3/8" Super duty pistol drill

- Powerful with 0.5 hp (380W) motor
- Teasing throttle and high speed precision drilling at 2600 rpm
- Industrial quality Jacob's chuck
- Needle bearing gearing and oil free operation
- Reversible and ergonomic grip
- Maximize operator comfort
- Productivity coupled with extreme durability
- Great tool for screw driving, honing and heavy drilling

CP789R-42

3/8" Super duty pistol drill

- Powerful with 0.5 hp (380W) motor
- Teasing throttle and high speed precision drilling at 4200 rpm
- Industrial quality Jacob's chuck
- Needle bearing gearing and oil free operation
- Reversible and ergonomic grip
- Maximize operator comfort
- Productivity coupled with extreme durability
- Great tool for small hole drilling and aluminum work

MODEL	PART NO.	FREE SPEED rpm	POWER		CHUCK CAPACITY		MAX TORQUE		AVERAGE AIR CONS.		AIR CONS. @ LOAD		OVERALL LENGTH		NET WEIGHT		AIR INLET	SOUND PRESSURE	VIBRATION m/s ²	
			hp	kW	in.	mm	ft.lb	Nm	cfm	l/s	cfm	l/s	in.	mm	lb	kg	NPTF	dB(A)	a	K
CP785	T022698	2400	0.5	0.38	3/8	10	3.1	4.2	4.1	1.9	17	-	7.0	178	2.3	1.15	1/4"	90	<2.5	-
CP785QC	T024242	2400	0.5	0.38	3/8	10	3.1	4.2	3.0	1.4	12	-	7.0	178	2.3	1.15	1/4"	90	<2.5	-
CP785H	T024134	500	0.5	0.38	3/8	10	-	-	3.0	-	12	-	7.8	197	3	1.36	1/4"	96	<2.5	-
CP789HR	T025165	500	0.5	0.38	3/8	10	-	-	7.5	-	30	14.2	7.5	190	3.3	1.5	1/4"	99	3,1	4,6
CP789R-26	T025180	2600	0.5	0.38	3/8	10	3.1	4.2	7.5	3.5	30	14.2	7.5	190	2.5	1.13	1/4"	101	<2.5	-
CP789R-42	T025198	4200	0.5	0.38	3/8	10	1.9	2.5	7.5	3.5	30	14.2	7.5	190	2.5	1.13	1/4"	104	<2.5	-



Chicago Pneumatic

CP780 *Roller Clutch Screwdriver*



- Roller clutch with external clutch adjustment
- Built-in quick change chuck
- Reverse control at the trigger
- High speed 1,800 rpm
- Clutch improves productivity and durability
- Fast screw fastening
- Ideal tool for general repair, mechanical assembly, wood, PVC, and body shop applications

CP781 *Roller Clutch Screwdriver*



- Roller clutch with external clutch adjustment
- Built-in quick change chuck
- Reverse control at the trigger
- Low speed 800 rpm and high torque: 75 in-lbs (8.5Nm)
- Clutch improves productivity and durability
- Ideal tool for general repair, mechanical assembly, wood, PVC, and body shop applications

CP782 *Roller Clutch Screwdriver*



- Roller clutch with external clutch adjustment
- Built-in quick change chuck
- High torque: 44 in-lbs (8.5Nm)
- Convenient forward/reverse valve
- Includes suspension bail
- Clutch improves productivity and durability
- Fast screwfastening
- Ideal tool for general repair, mechanical- assembly, wood, PVC, body shops applications

CP785S *Heavy Duty Pistol Shear*



- Powerful efficient 0.5 hp (380W) motor to cut up to 18 gauges steel (0.04" - 1.1mm)
- Triple idler planetary gearing
- Ergonomic handle design
- Smooth operation and extended life
- Reliable cutting performance
- Excellent tool for cutting square and angles in all types of aluminum, tin and steel applications of large drilling

Suspension Bail for CP 782

PART NUMBER

DESCRIPTION

C148806

Suspension bail



MODEL	PART NO.	STROKES per MIN.	STROKES		AVERAGE AIR CONS.		AIR CONS. @ LOAD		OVERALL LENGTH		NET WEIGHT		AIR INLET	HOSE INT.		SOUND PRESSURE	VIBRATION	
			in.	mm	cfm	l/s	cfm	l/s	in.	mm	lb	kg		in.	mm		a	K
CP785S	T023200	2400	-	-	3.7	1.78	15	7.3	9.0	229	1.9	0.86	1/4	3/8	10	84	3.2	3.0

MODEL	PART NO.	FREE SPEED rpm	TORQUE				AVERAGE AIR CONS.		AIR CONS. @ LOAD		OVERALL LENGTH		NET WEIGHT		OUTPUT DRIVE	SOUND PRESSURE	VIBRATION	
			in.lb	Nm	in.lb	Nm	cfm	l/s	cfm	l/s	in.	mm	lb	kg			a	K
CP780	T025095	1800	25	2.8	44	5.0	4	1.9	16	7.6	8.3	210	2.5	1.13	HEX 1/4" F	98	2.9	1.4
CP781	T025096	800	25	2.8	75	8.5	4	1.9	16	7.6	8.9	226	3.0	1.36	HEX 1/4" F	99	<2.5	-
CP782	T025097	1800	31	3.5	44	5.0	4	1.9	16	7.6	9.6	245	2.5	1.13	HEX 1/4" F	94	<2.5	-



Chicago Pneumatic

CP858 Belt Sander 3/8" Capacity



- Quick change belt replacement
- Adjustable sanding arm
- Handle exhaust
- Excellent for paint removal, weld sanding, smoothing, and rust removal in tight areas

Belt Sanders for CP 858

PART NUMBER	DESCRIPTION
CA156714	Belts 60 Grit, 3/8"x13" (10x330mm) (5)
CA156722	Belts 80 Grit, 3/8"x13" (10x330mm) (5)
CA156735	Belts 120 Grit, 3/8"x13" (10x330mm) (5)



CP861 Heavy Duty High Speed Cutter



- Wheel diameter 2-7/8" (73mm)
- Rugged, energy efficient 0.5 hp (380W) motor
- Lightweight tool: 1.6 lbs (0.74kg)
- Square handle design for positive grip
- Safety lever to prevent accidental start up
- Powerful, durability and productivity
- Excellent for cutting through composite, fiberglass, steel metal, bolts, clamps and hangers

Wheel for CP 861

PART NUMBER	ACCESSORIES
CA155312	Package of 5 wheels (ø 2-7/8"x1/16"x3/8" - 73x1.6x9.52mm)



CP881 Heavy Duty Reciprocating Saw



- Power and speed of 9,500 strokes per minute
- Heavy duty construction
- Adjustable guard guide
- Comfortable rubber grip
- Includes 32T(1) saw blade
- Cut through material with ease
- Powerful and durability
- Ideal tool for intensive use

Saw Blade for CP 881

PART NUMBER	ACCESSORIES
CA146719	18T Saw blades (5)
CA146720	24T Saw blades (5)
CA146721	32T Saw blades (5)



MODEL	PART NO.	FREE SPEED rpm	PAPER BELT		AVERAGE AIR CONS.		AIR CONS. @ LOAD		OVERALL LENGTH		NET WEIGHT		AIR INLET	SOUND PRESSURE	VIBRATION m/s ²	
			In.	mm	cfm	l/s	cfm	l/s	in.	mm	lb	kg	NPTF	dB(A)	a	K
CP858	T025179	18,000	3/8x13	10x330	11	5.2	22	10.4	12	304	1.87	0.85	1/4	93	<2.5	-

MODEL	PART NO.	STROKES per MIN.	STROKES		AVERAGE AIR CONS.		AIR CONS. @ LOAD		OVERALL LENGTH		NET WEIGHT		AIR INLET	HOSE INT.	SOUND PRESSURE	VIBRATION m/s²		
			in.	mm	cfm	l/s	cfm	l/s	in.	mm	lb	kg	NPTF	in.	mm	dB(A)	a	K
CP881	T023916	9,500	3/8	10	1.5	0.6	6.0	2.8	8.6	219	1.6	0.74	1/4	3/8	10	84	23.2	6.6

MODEL	PART NO.	FREE SPEED rpm	CHUCK / WHEEL SIZE		AVERAGE AIR CONS.		AIR CONS. @ LOAD		OVERALL LENGTH		NET WEIGHT		AIR INLET	HOSE INT.	SOUND PRESSURE	VIBRATION m/s²		
			in.	mm	cfm	l/s	cfm	l/s	in.	mm	lb	kg	NPTF	in.	mm	dB(A)	a	K
CP861	T022039	20,000	2-7/8	73	2.1	1.0	8.5	4.0	7.8	197	1.6	0.74	1/4	3/8	10	78	2.8	1.0



Chicago Pneumatic



Over 110 years of experience

Since 1901 the Chicago Pneumatic name has represented high-performance tools and equipment designed for an extensive range of applications. Today, Chicago Pneumatic has a global reach, with local customer centers around the world. Chicago Pneumatic tools and air compressors are tailored to the needs of the industrial, vehicle service, and construction markets. Every day we develop and manufacture new products that are meant to meet your demands not only today, but tomorrow as well.

To learn more about range of tools, hydraulic attachments, industrial and portable compressors, accessories and workshop equipment, please visit www.cp.com.



It's when you get a product just right.

There comes a time when the best-known products go beyond the standard they set to become must-have **Classics**.

**Chicago Pneumatic is Proud to Bring Together
the Tools You Already Know:**

The Classic Range

Classic Chicago Pneumatic products such as these get jobs done,
as they have for decades.

Featuring authentic styling you have come to love.

Designed for you.



LIMITED (2 YEARS) WARRANTY FOR CP CLASSIC RANGE*

Of course all new Chicago Pneumatic products are warranted* to be free from defects – 1 year from date of purchase comes standard in the manufacturer's limited warranty.

With the Classic range of new products, you can be doubly sure that CP warrants its material and workmanship, because these products have been selected, tested, and proven by thousands and thousands of tool users, year after year.

So now CP is putting a 2-Year Limited Warranty in writing on this Classic series of tools.

**To Validate the Limited Warranty Extension,
You Must Register EACH Tool at:
www.cp.com/classic**

Registration of each tool on the website is **REQUIRED** within 4 weeks of the original purchase date. CP will not honor Warranty extensions (beyond the standard manufacturer's limited warranty) on unregistered tools.

* For more information on standard and extended warranties, please visit www.cp.com.

www.cp.com/classic

Chicago Pneumatic Tools follows a policy of continuous product improvement. Specifications and descriptions are thus subject to change without notice. Check the online ecatalog at www.cp.com for the latest product information.



Chicago Pneumatic

© Copyright 2011
October 2011 - Issue 2